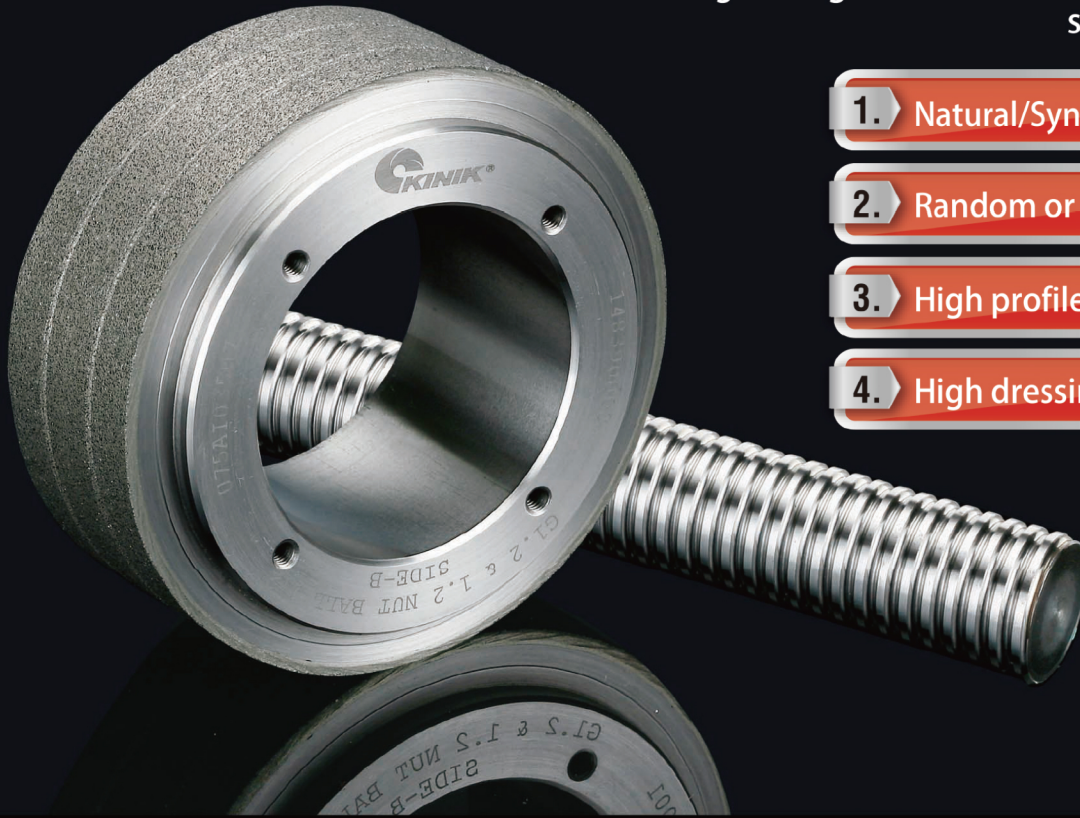


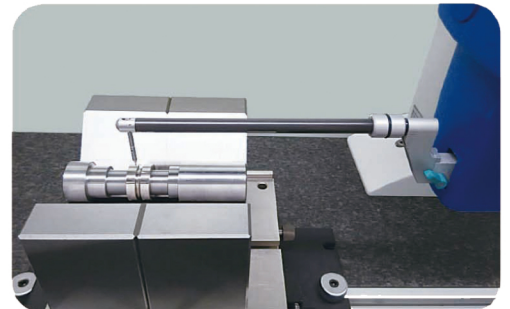
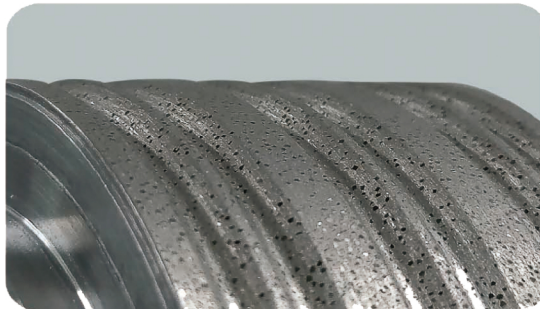
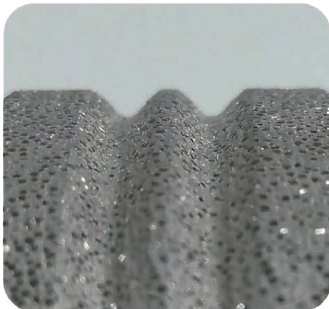


# Diamond Roller

The diamond rollers developed by KINIK are used to dress the complex and high-precision shape of grinding wheels for transmission components such as ball screws etc..



1. Natural/Synthetic or CVD diamond
2. Random or regular distribution
3. High profile precision
4. High dressing efficiency



- Characteristics: Reversed-plating, random distributed diamond, high-precision profile

- Diamond size: #18/20~#40/45

- Applications: High-precision shaping of grinding wheels for ball screws, slides, bearings, gears, tools, aerospace & automotive parts etc.



No.64 Zhongshan Rd., Yingge Dist.,  
New Taipei City 239010, Taiwan (R.O.C)

TEL:886-2-26791931 FAX:886-2-26703031 <https://www.kinik.com.tw>